

TNM STAGING OF LUNG CANCER

Primary Tumor (T)	T1	T2	T3	T4
Criteria	(a&b&c)	Any of a,b,c,d	(a&c)/b/d	(a&c)/ d
a. Size	≤3cm	>3 cm	Any	Any
b.Endo bronchial location	No invasion proximal to the lobar bronchus	Main bronchus (≥ 2 cm distal to the carina)	Main bronchus (<2 cm distal to the carina)	-
c.Local invasion	Surrounded by lung or visceral pleura	Visceral pleura	Chest wall ** / diaphragm/ mediastinal pleura/ parietal pericrdium	Mediastinum/ trachea /head/ greatvesses/ esophagus/vertebral body carina
d.Other	-	Atelectasis/ obstructive pneumonlts that extends to the hilar region but does/t involve the entire lung	Atelectasis obstructive pneumonlts of the entire lung	Malignant pleural /pericardial effusion on satellite tumor nodule(s) within the lpsilateral primary – tumor lobe of the lung.

TNM STAGING OF LUNG CANCER

LYMPH NODE (N)		NO	N1	N2	N3
Peribronchial (Ipsilateral)		-	+		
(Ipsilateral)	Hilar	-			
			\&		
(Contralateral)			-	-	-
Subcarinal		-	-	+ &/ +	
(Ipsilateral)	Mediastinal	-	-		
Contralateral			-		
Scalene (Ipsi- / contralateral)		-	-	-	+
Supraclavicular		-	-	-	+

TNM STAGING OF LUNG CANCER

METASTASES (M)

M0 : **Absent**

M1 : **Present**

Separate metastatic tumor nodule (s) in the ipsilateral
Nonprimary – tumor lobe (s) of the lung also are classified M1

Tis : Carcinoma in situ

Staging is not relevant for Occult Carcinoma(Tx, NO, MO)

TNM STAGING OF LUNG CANCER

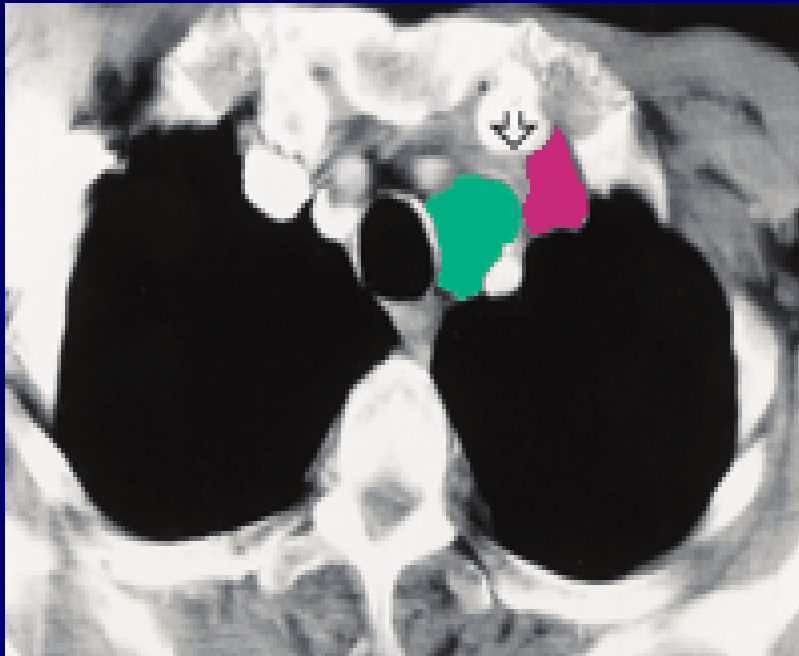
TNM STAGING OF LUNG CANCER

- STAGE 0 T_{IS}
- STAGE 1A T_1 N_0
- STAGE 1B T_2 N_0
- STAGE II A T_1 N_1
- STAGE II B T_2 N_1
 T_3 N_0

TNM STAGING OF LUNG CANCER

- STAGE III A T_{1-3} N_2
 T_3 N_1
- STAGE IIIB Any T N_3
 T_4 Any N
- STAGE IV Any T Any N M_1

Small cell lung cancer:



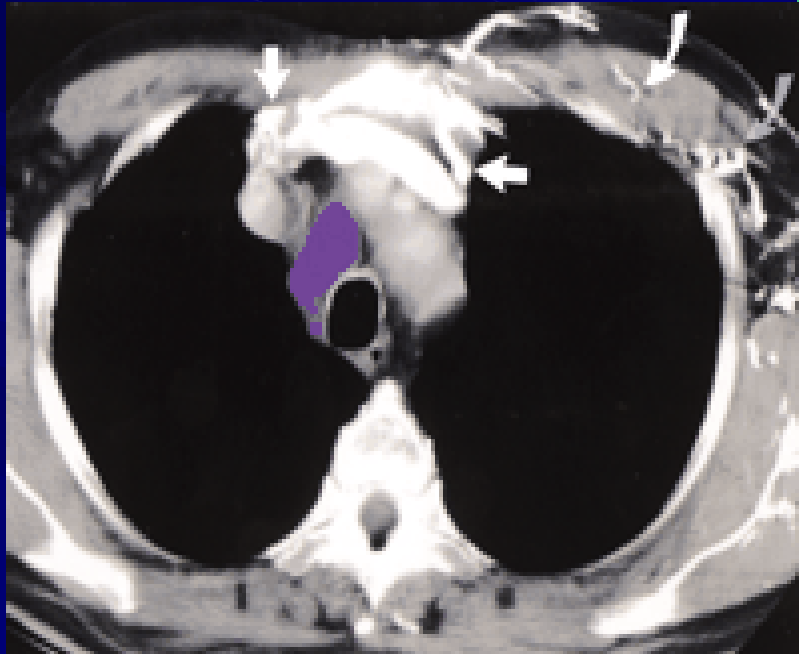
Station 1 (green) :

This node is lying between the left common carotid artery and the left subclavian artery

Station 3A (pink) :

This is anterior to and left of major arterial vessels

Small cell lung cancer and superior vena cava syndrome:



Station 2 (purple) :

Note reflux into anterior

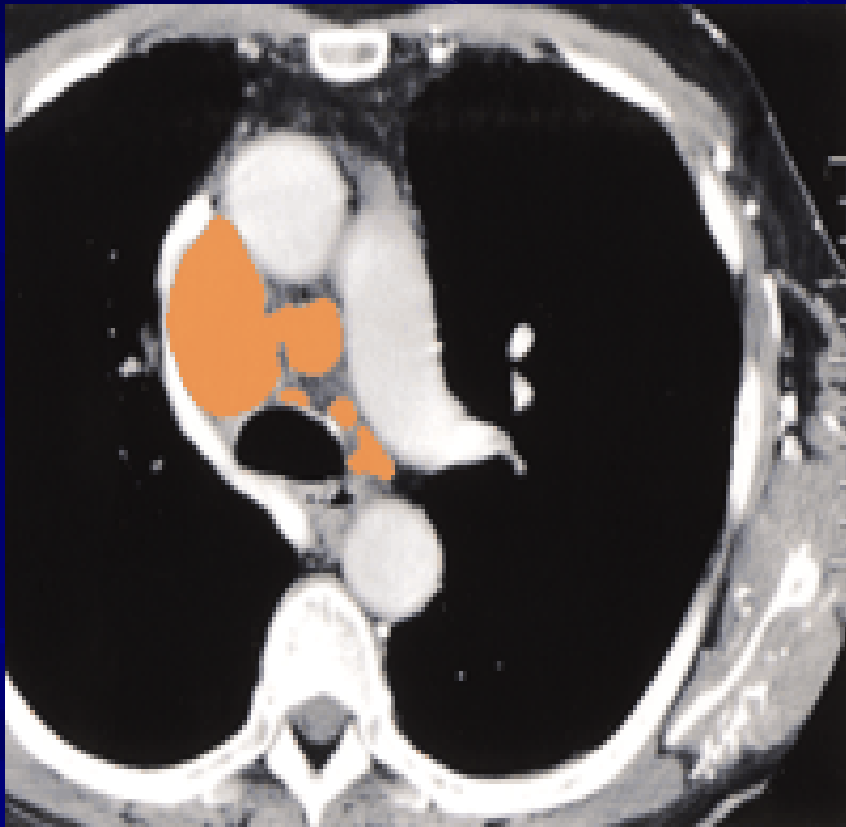
chest wall collaterals

(curved arrows) and both

internal mammary veins

(straight arrows).

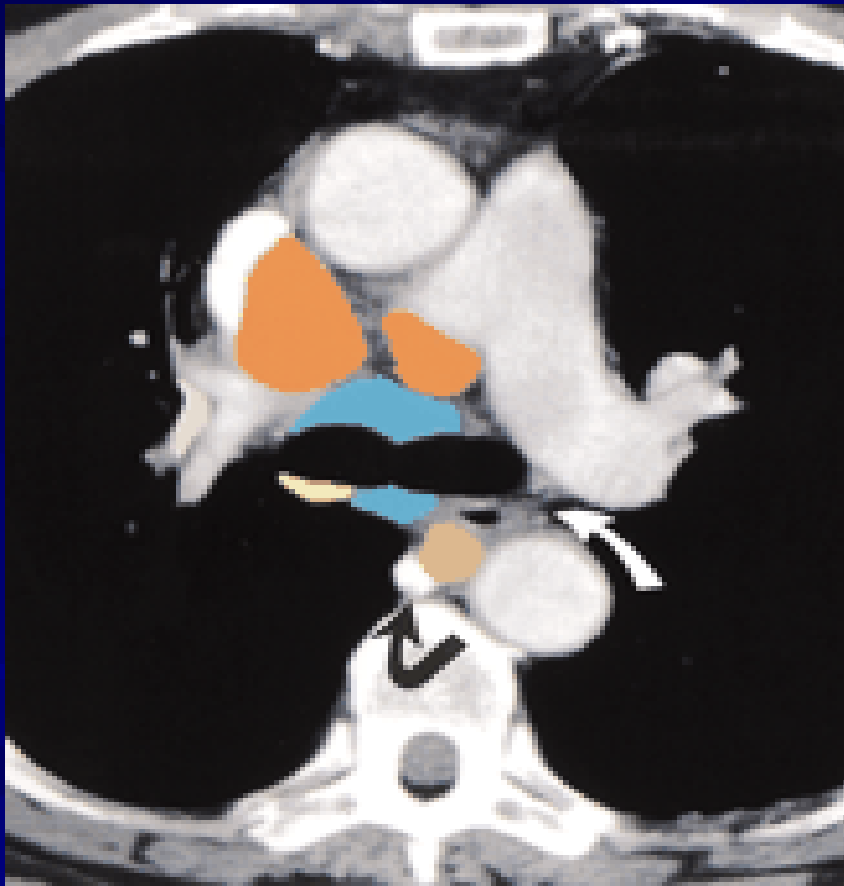
Small cell lung carcinoma and superior vena cava syndrome:



Station 4 (orange) :

The inferior nodes are below a horizontal line drawn at the superior aspect of the azygos vein.

Small cell lung carcinoma and superior vena cava syndrome:

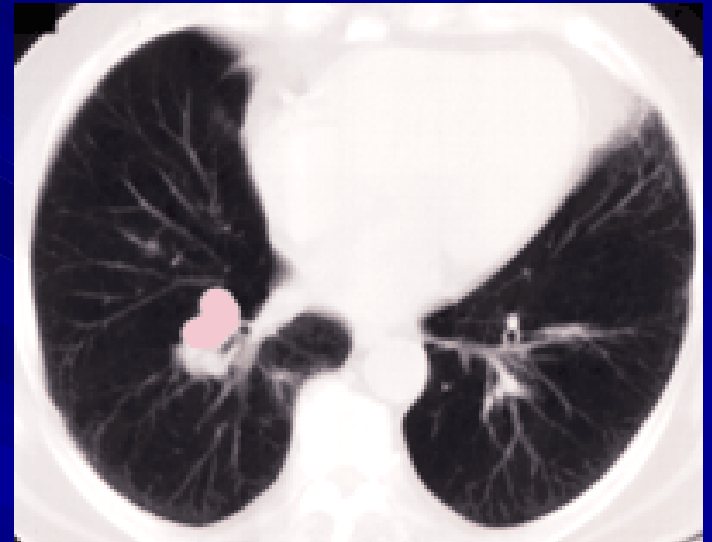
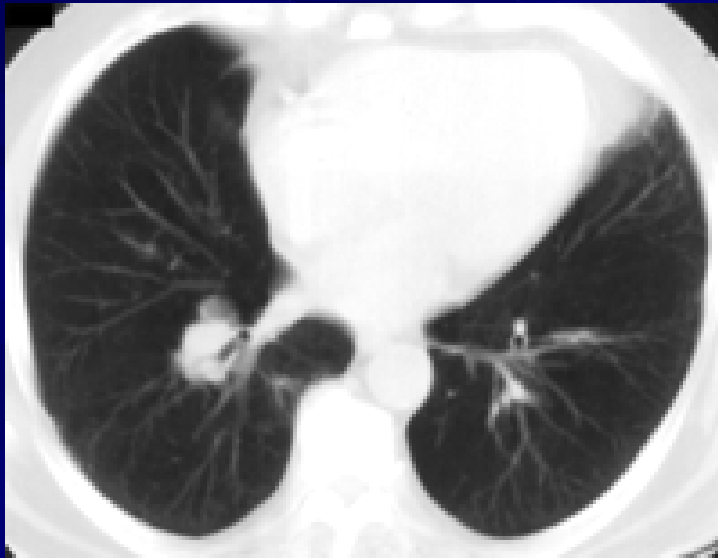


Station 7 (blue) : Subcarinal adenopathy

Station 8 (tan) : The paraesophageal nodes lie posterolateral to the esophagus (white arrow) between azygos vein (black arrow) and aorta

Station 10 (yellow) : Hilar nodes

Small cell lung carcinoma:



Station 13 : The segmental nodes are seen anterior to the lateral basal bronchus.

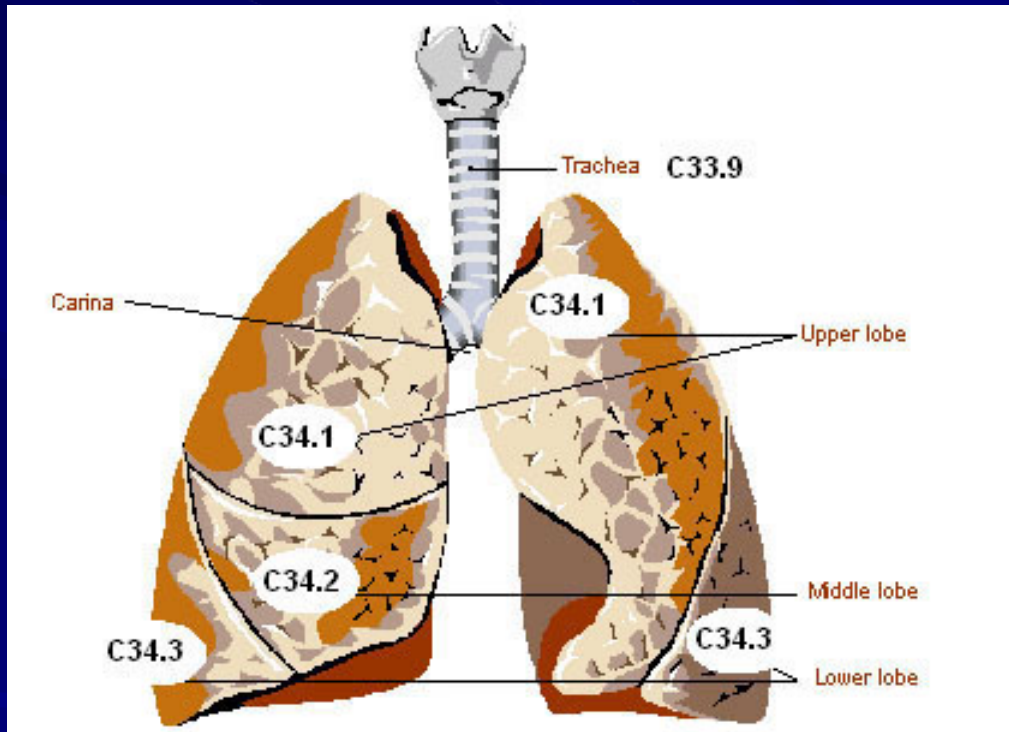
Small cell lung carcinoma:

Station 14 :



The subsegmental node is seen adjacent to the subsegmental bronchus (curved arrow). The ground glass opacity (black arrow) represents the top of the primary tumour.

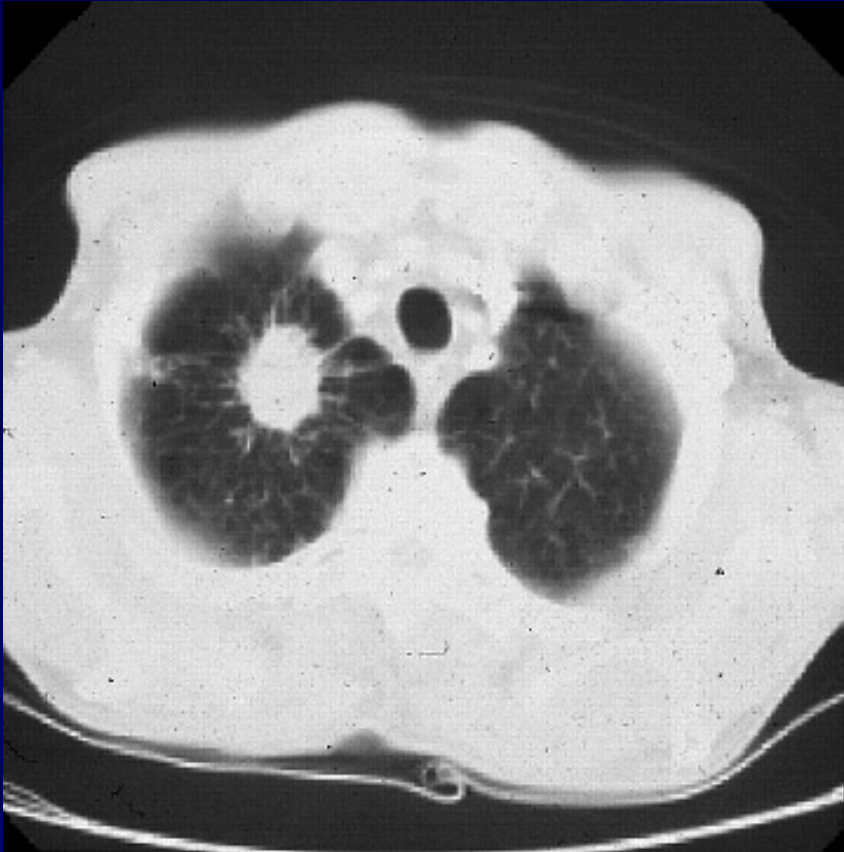
Lung Anatomy (Showing ICD-O-2/3 Codes)



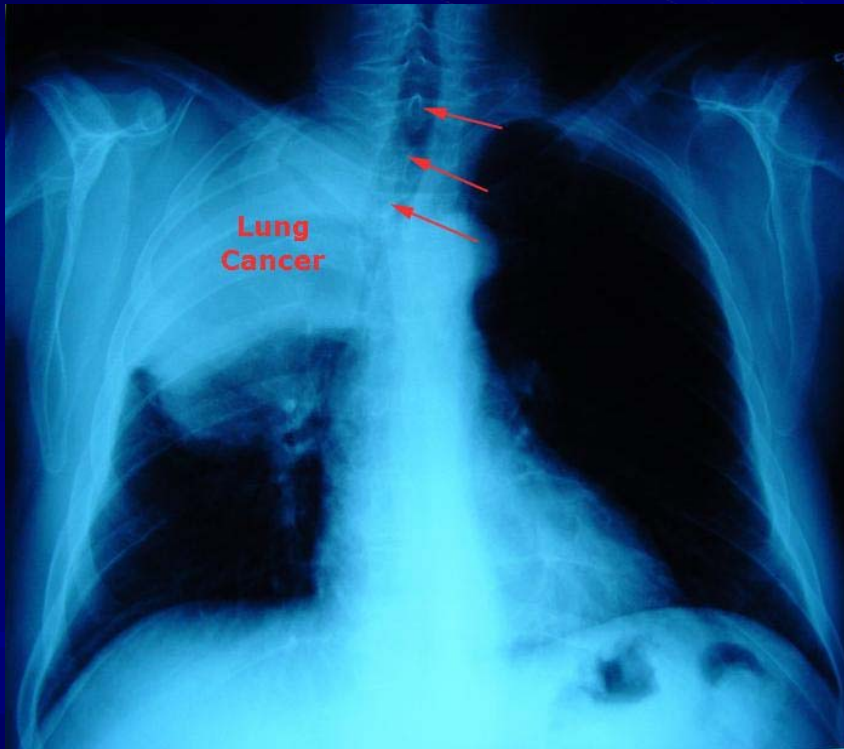
ICD-O-2/3	Term
C34.0	Main Bronchus
C34.1	Upper lobe, lung
C34.2	Middle lobe, rt.lung
C34.3	Lower Lobe, lung
C34.8	Overlapping Lesion of lung
C34.9	Lung NOS
C33.9	Trachea, NOS

RELATED ADJECTIVES: Lung = pneumo-, pulmono-, broncho-, bronchiolo-, alveolar, hilar, Breathing = -pnea

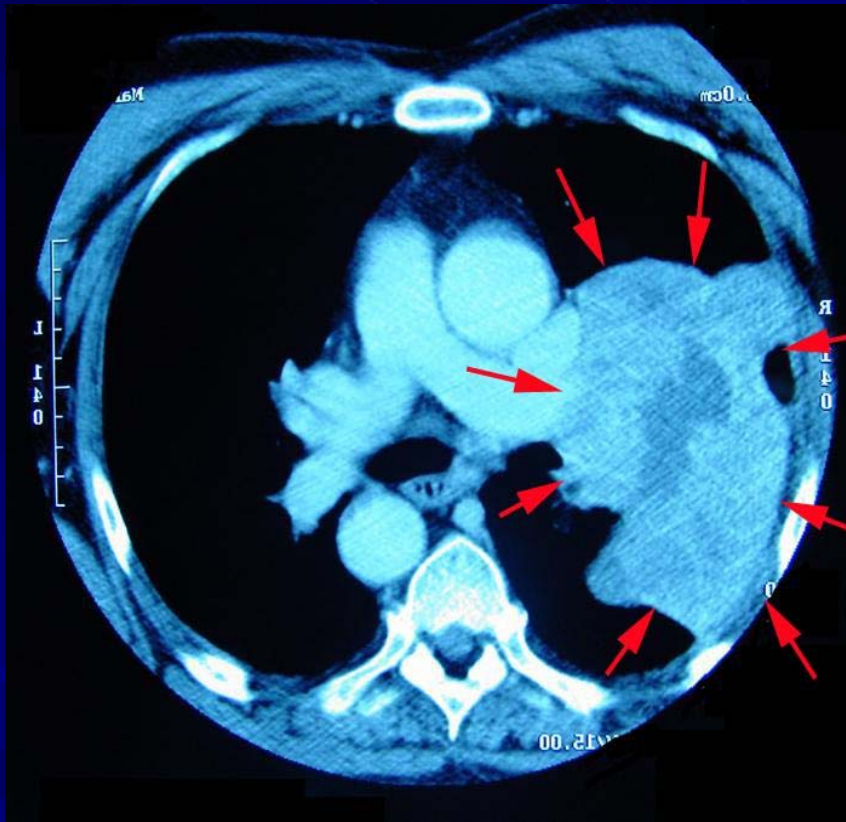
TNM STAGING OF LUNG CANCER



TNM STAGING OF LUNG CANCER



TNM STAGING OF LUNG CANCER



TNM STAGING OF LUNG CANCER

